

Welcome to the first Restricted Access Webinar
'Rotary Restricted Access Piling'

www.roger-bullivant.co.uk

✉ Info@roger-bullivant.co.uk

☎ 0845 838 1801

in @rogerbullivantlimited



Restricted Access Bored Piling – Sectional Flight Auger (SFA)

Oliver Dawson *MEng (Hons) GMICE*
Mini Piling Manager – South East

David Johnson *BEng (Hons) FGS*
Area Manager – South Wales



Contents

01 Our Business

02 Hollow Stem Auger Piles

03 Solid Stem Auger Piles

04 Cased Auger Piles

05 Questions



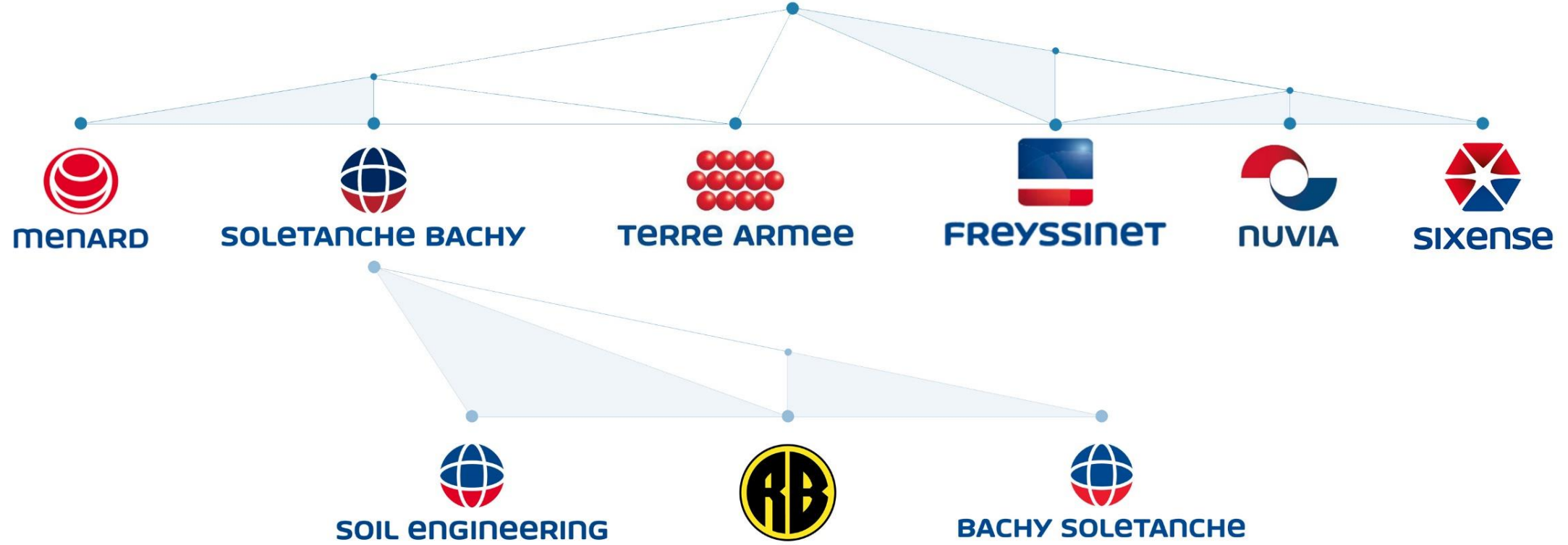
01

Our Business

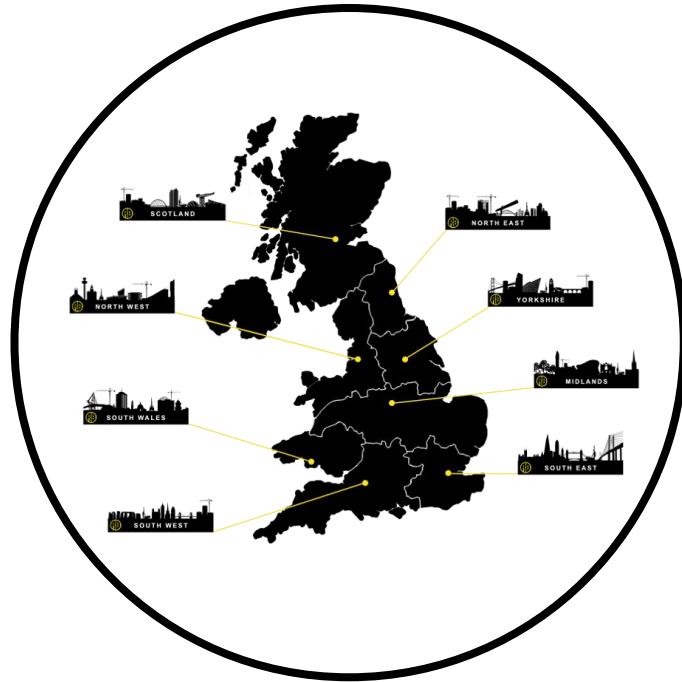




SOLETANCHE FREYSSINET



About



Wealth of experience...



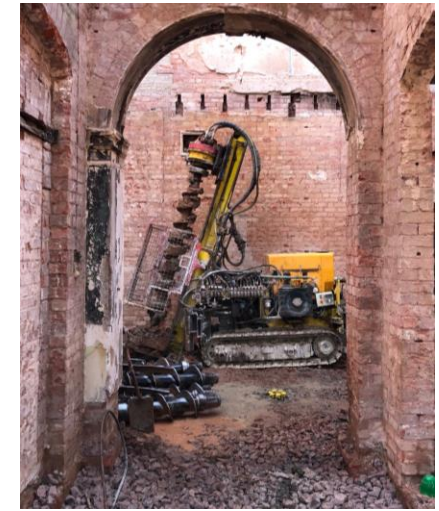
PILING



**GROUND
IMPROVEMENT**



FOUNDATIONS



**RESTRICTED
ACCESS**



Restricted Access Bored Piling – Sectional Flight Auger (SFA)

Oliver Dawson *MEng (Hons) GMICE*
Mini Piling Manager – South East

David Johnson *BEng (Hons) FGS*
Area Manager – South Wales



Continuous Flight Auger (CFA)



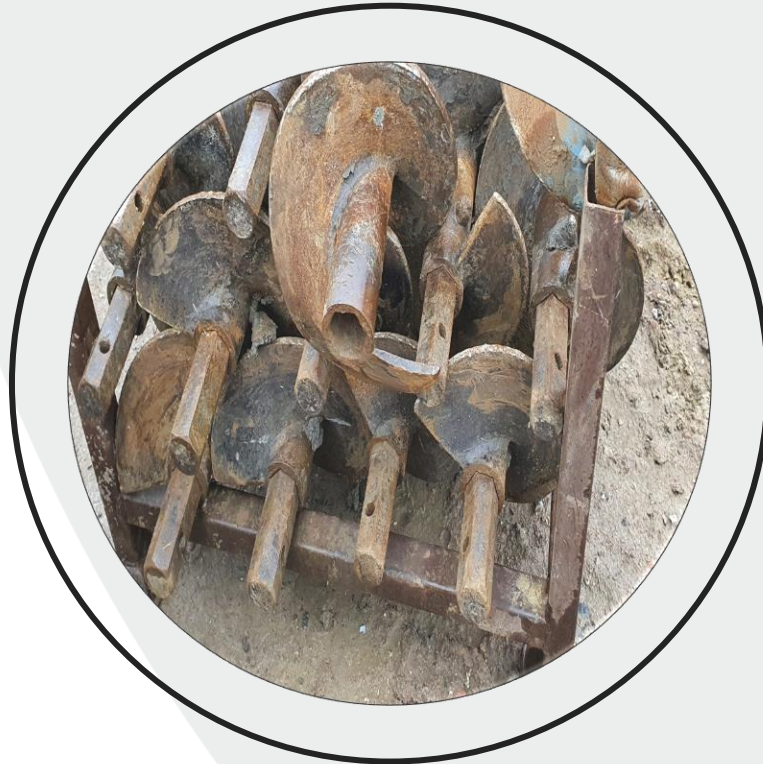
Sectional Flight Auger (SFA)



Hollow Stem Auger



Solid Stem Auger



Case and Auger

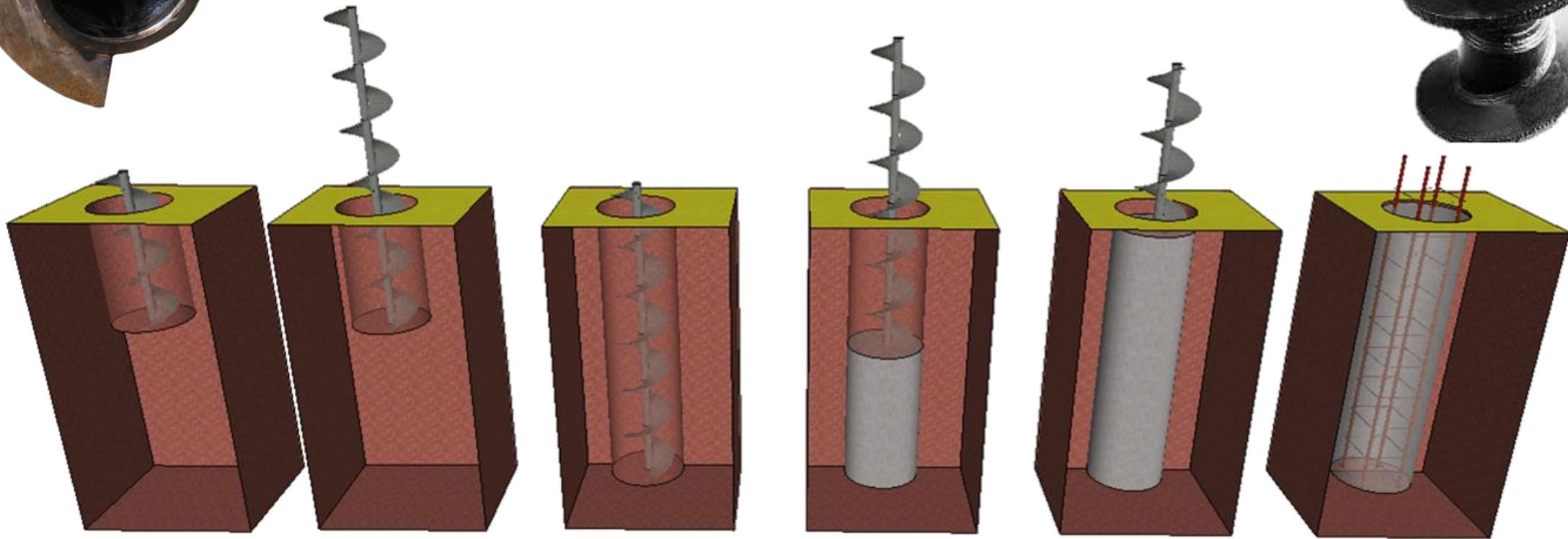


02

Hollow Stem Auger



Hollow Stem Auger SFA piling



Hollow Stem Auger (SFA)

- 250mm to 750mm diameter piles
- High load capacity (Compression, Tension & shear)
- Applicable in a variety of ground conditions
- Installed in restricted access and headroom
- Minimal noise and vibration
- Reinforcement is plunged into concrete





Case Study- Dartford

Main Contractor – Coleman and James

Key issues/requirements

- Piling for bridge abutments
- Weight limits on bridges into site
- Constrained working area
- High shear loading
- Strict lateral deflection limits

Project Solution

- 19 No. 300mm and 28 No. 600mm dia. piles
- Pile depths up to 14.5m
- Suitable and efficient rig chosen from fleet
- Hollow stem method used
- 9.0m long heavy reinforcement cages plunged into concrete

Value - £103k

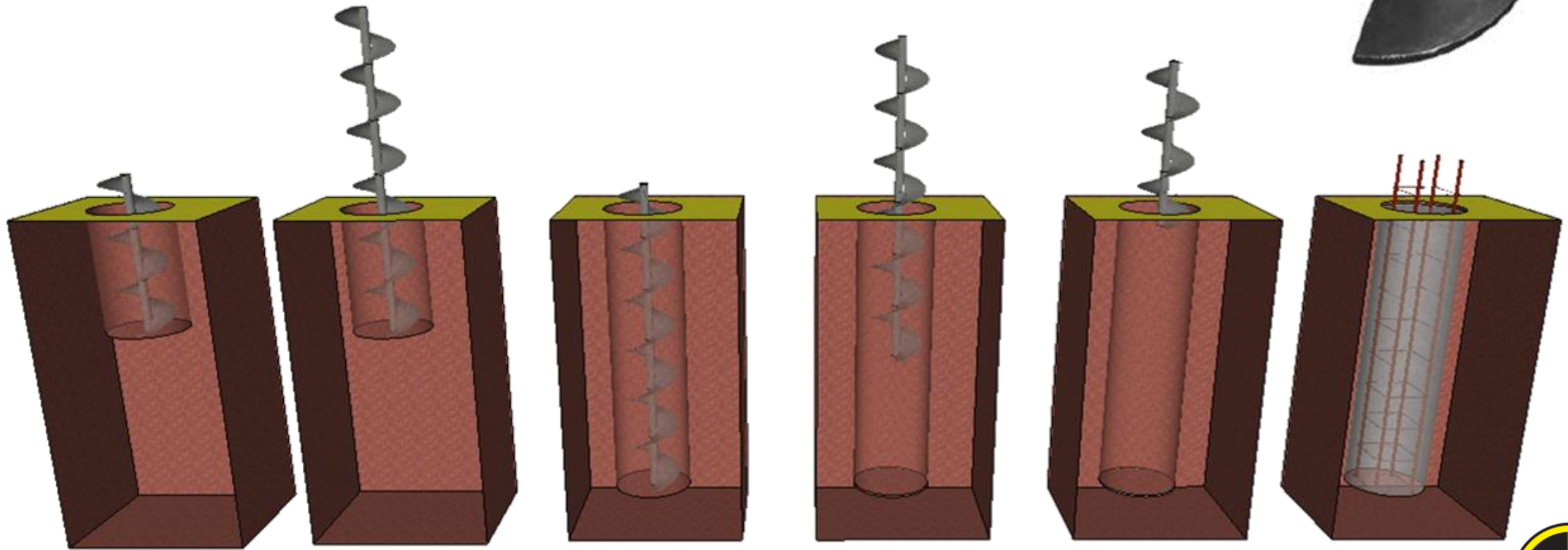


03

Solid Stem Auger



Solid Stem Auger



Solid Stem Auger (SFA)

- 250mm to 750mm diameter
- High load capacity
- Lightweight augers
- High production rates
- Limited reliance on concrete supply
- Only suited to freestanding soils
- Water ingress or deep piles will require filling via tremie
- Material and programme savings





Case Study- Seasalter

Walker Construction

Key issues/requirements

- London Clay Formation
- Dry ground conditions
- Retaining wall
- Lightly loaded bearing piles

Project Solution

- 54 No. 400mm dia. contiguous bored piles
- 68 No. 350mm dia. bearing piles
- All piles formed using solid stem technique
- Pile depths up to 12.5m
- Tremie grouted

Value - £88k

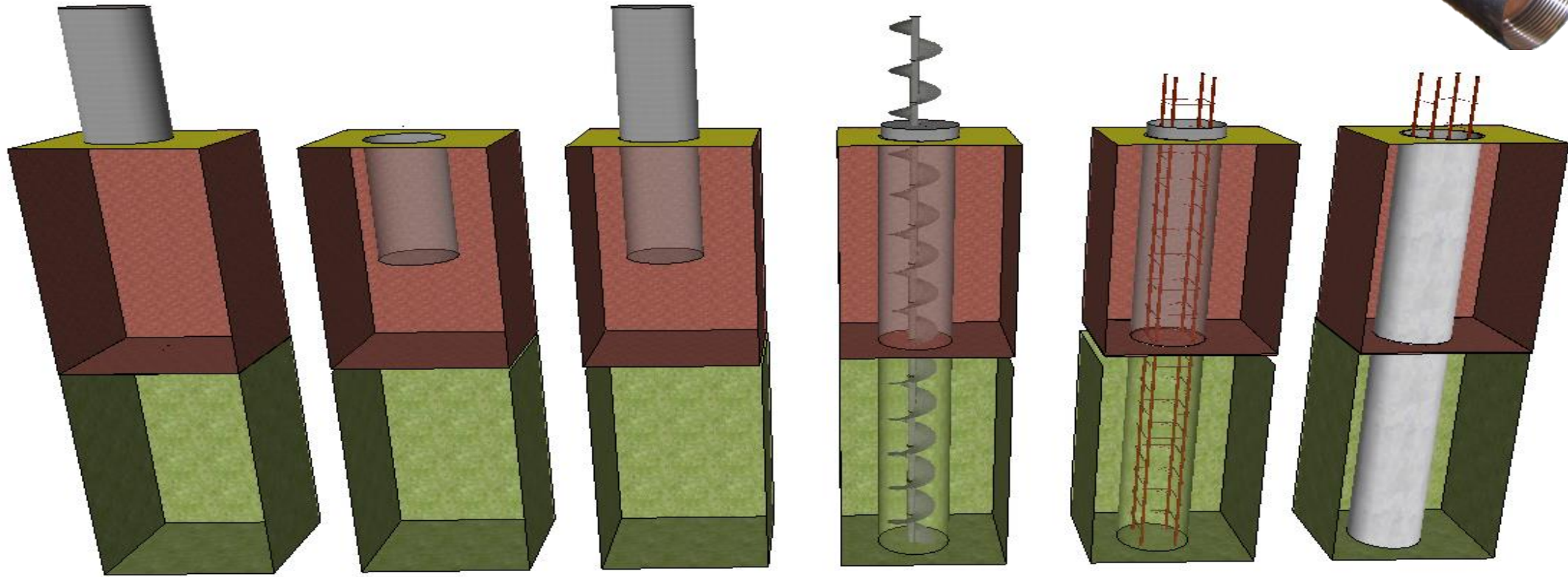


04

Case and Auger



Case and Auger



Case and Auger

- 340mm to 660mm outside diameter
- Prevent collapse of loose/soft soils
- Allows for placement of reinforcement prior to concrete
- Prevents over flighting/ undermining
- Permanent sleeve against voids
- Slip sleeve for buried infrastructure
- Increase lateral capacity of the pile





Presentations

Upcoming

- Restricted Access Driven
- Restricted access – Specialist Techniques

Previous

- An Introduction to Driven Piling
- Wet Displacement Piling
- Foundations You Can Build On
- Ground Improvement

www.roger-bullivant.co.uk/webinars-2



Thank you for listening

www.roger-bullivant.co.uk

✉ Info@roger-bullivant.co.uk

☎ 0845 838 1801

in [@rogerbullivantlimited](https://www.linkedin.com/company/rogerbullivantlimited)

