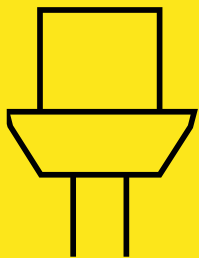


roger-bullivant.co.uk

# RBEAM PRECAST GROUND BEAM SYSTEM

Roger Bullivant Limited is the market leader in precast ground beam systems. The RBeam system comprises five types of beams in a range of standard lengths allowing our in-house design team to produce highly efficient foundation solutions for any project. A precast ground beam system decreases the time needed to construct foundations and reduces wastage compared to trench fill foundations.

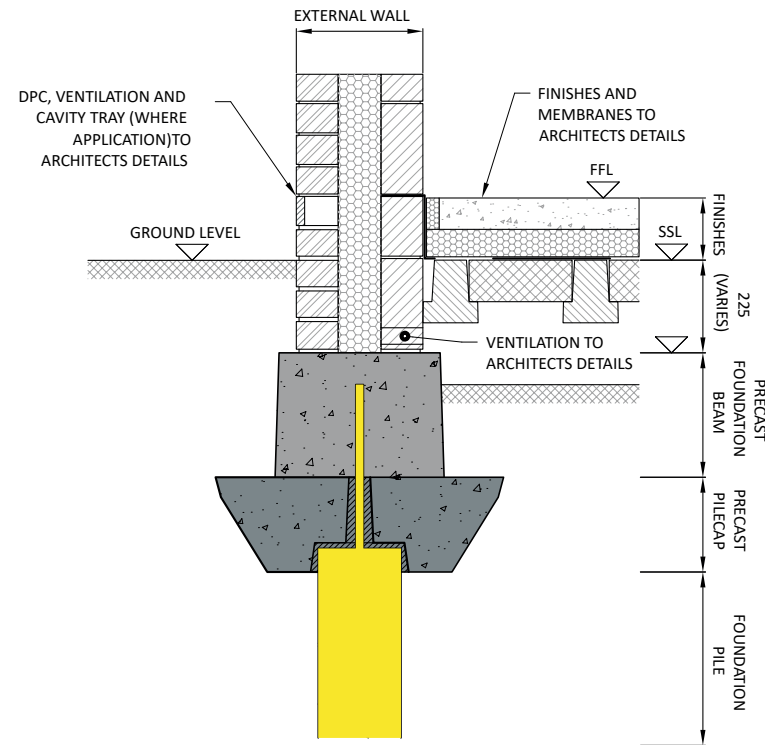




## DESCRIPTION

RBeam precast foundations are one of the most versatile and highly efficient foundation solutions on the market. A value-engineered design system tailored for the specific projects ground conditions and requirements. Suitable for use in residential and commercial buildings up to four-storey buildings. The modular foundation system is designed, manufactured, and stored at RB's state-of-the-art manufacturing facility in South Derbyshire. Catering for all ground conditions including heave potential or both flat and sloping sites.

RBeam is certified under ISO 45001:2018, ISO 9001:2015, and ISO 14001:2015.



## APPLICATIONS



Residential



Commercial

## ADVANTAGES



Reduced excavation



Immediate follow-on construction



Cost effective



Bespoke geotechnical design



Reduced lead times



Manufactured in-house

## INSTALLATION

The modular foundation system is quick to off-load and install on-site. RB employs approved installation teams for all precast concrete systems.

Installation of the beams is not weather dependent and the lack of excavations and the use of level working platforms reduce the health and safety risks to a minimum.

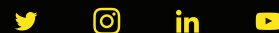
These highly trained installation teams are proficient with the systems and can each install up to several hundred linear metres of beam every week.

We hold extensive stock levels of beams and pile caps - with a range of beams sizes available. Our commitment to stock holding allows reduced project-lead times.

## TECHNIQUE CAPABILITIES

The RBeam system comprises a beam to beam connection, this reduces the number of piles required compared to other systems. The RBeam is 400mm wide and 300mm, 375mm or 450mm deep, manufactured in 150mm incremental lengths from 900mm to 6000mm.

[roger-bullivant.co.uk](http://roger-bullivant.co.uk)



Call Nationwide on 0845 8381801

Email [info@roger-bullivant.co.uk](mailto:info@roger-bullivant.co.uk)